



## Resources:

**PD524A...**Pouring Medium

Acrylic paint in X2, X4, or X6

**PB209...**Stretched Canvas

**PD524A567** Silicone Oil

**PA403A** Mixing Cups

**PA529** Wooden Spatulas

**BR660A...**Mural Brush

### Mixing Ratios for X-Series Acrylic Paints

2 parts X2 Acrylic: 1 part Pouring Medium 1 part Water.  
1.5 parts X4 Acrylic: 1 part Pouring Medium: 1 part Water.  
1 part X6 Acrylic: 1 part Pouring Medium: 1 part Water.



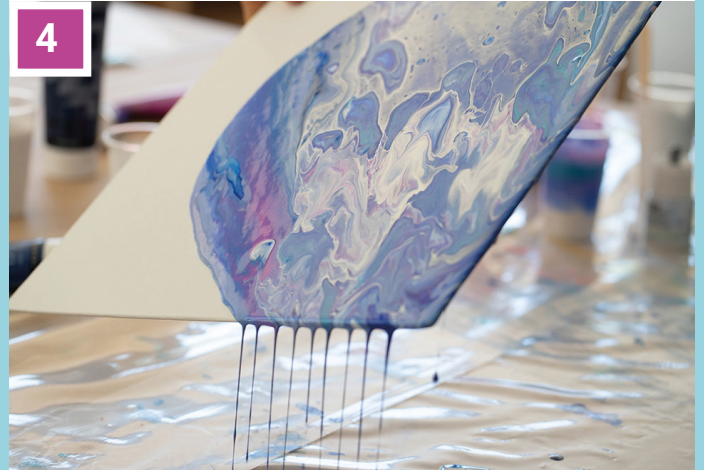
Mix approximately 1 part X2 Acrylic, 1 part Pouring Medium and 1 part water to create fluid paints with the consistency of warm honey. Some paints vary slightly in consistency so you may need to add more water. Stir in a few drops of Silicone Oil to each of your chosen acrylics to help the paint form 'cells'.



Finally, starting with white, pour a layer of each colour in differing amounts into a separate cup. Protect your area - this will get messy! A plastic tray is ideal to catch any drips. Place the canvas on supports and pour your cup of layered paint over the surface of your canvas.



Tilt your canvas around to let the paint cover the entire surface.



Additional colours can be added by simply pouring more paint over your canvas.



A spatula can be used to swipe across the surface of your canvas to create additional effects. Simply pour a strip of paint across one edge of your canvas and slowly pull your spatula (or a plastic ruler!) across the canvas dragging the paint over the other colours. Wait for the cells to appear!



The painted canvas will take around 2 days to completely dry. You can add a glossy finish to your work when it is dry by coating it with a thick layer of varnish or glazing resin. Remember to clean off any excess oil from the surface of your painting before varnishing it.

Order these products and over 28,000 others on our website at:  
[www.dryadeducation.co.uk](http://www.dryadeducation.co.uk)