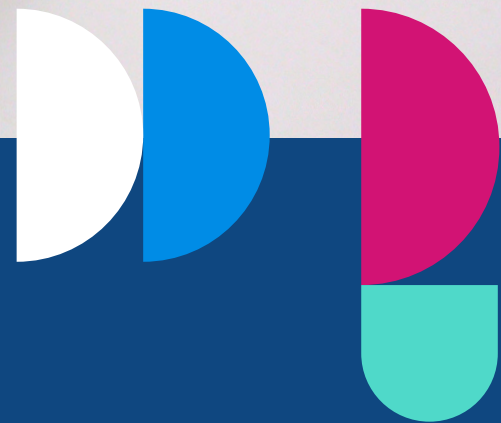


How To Self-Expression Mantel Clock

Inspired by The Great Pottery Throw Down



Get Started What You'll Need



- PM033A**
Specialist Crafts White St Thomas Clay Original


- PM415**
Pottery Knife


- PM025**
Specialist Crafts Plastic Modelling Tool Set


- PM426A700**
Specialist Crafts Lead-Free Earthenware Glazes


- PM444**
Specialist Crafts Rolling Guides


- PM445**
Specialist Crafts Rolling Pin


- PM115**
Specialist Crafts Clay Cutter


- PA220A**
Artists' Sponge


- PM125**
Specialist Crafts Rubber Kidney

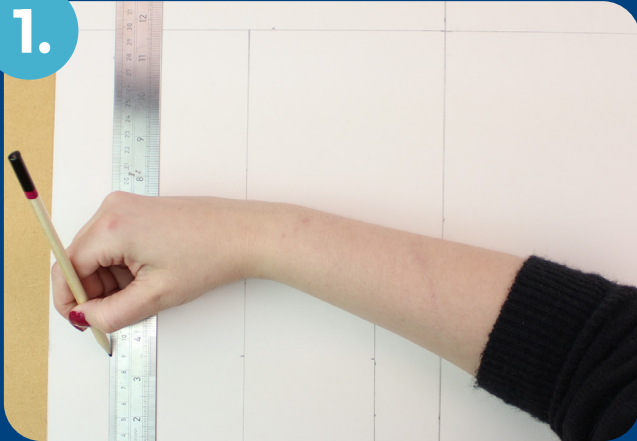

- CN290A**
Clock Movements



Step by Step

LET'S CREATE

1.



Create a template for your clock.

2.



Cut and knead your clay.

Tip. Creating ram's horns helps the clay to get rid of air.

3.



Roll out your clay to an even depth using rolling guides to help.

4.



Using a clay knife cut out your templates in the clay.

5.



Allow the clay to dry to leather hard evenly all over.

Tip. Lay your clay on a former so it dries in the right position.

6.



Once leather hard. Measure and cut out your hole for the clock hands. Remember to account for the shrinkage rate so make the hole bigger than your clock mechanism.

Step by Step

LET'S CREATE

7.



Score your clock where you want to join sections and join with slip. Smooth with a sponge.

8.



Repeat to stick the flat faces of the clock to the middle section. Make your middle longer than your faces so you have excess to cut off.

9.



Smooth your clock with a damp sponge and rubber kidney.

10.



Add texture and details with your clay tools. Once detail is added allow the clock to fully dry to the point it is bone dry.

11.



To get a stable base, you can make circles on a rough surface to fettle away raised edges.

12.



After you Bisque fire at the temperature suggested for the clay. Draw in a normal HB pencil more detail.

Step by Step

LET'S CREATE

13.



Paint on your glaze. Use two or three coats and don't mix glazes.

14.



After the second fire attach your clock movements. Tip. Snip and sand down the hands if they are too long.



Inspired by The Great Pottery Throw Down, where artists pour their emotions into clay to create meaningful, personal pieces.

This project aligns with the UK Art & Design curriculum by encouraging students to develop their ideas, master sculpting techniques, and explore storytelling through sculpture. It allows them to create meaningful, personal artwork while building confidence in working with ceramics.

Take inspiration from our creative Katie, who made her clock truly personal. She sculpted a tiny, delicate version of her cat, carved a bridge from her holiday to Mostar in Bosnia and Herzegovina—where she got engaged to her now husband—and painted her favourite flowers in glaze. Every detail tells a piece of her story! Encourage your students to do the same, weaving their memories, passions, and experiences into a unique functional artwork.

What will your student create? Share their creations and tag us on social media @dryadeducation

For more inspirational content visit: [dryadeducation.com/creative-corner](https://www.dryadeducation.com/creative-corner)